

**Plant List**

Key	Quantity	Name	COMMON Botanical	Size	Comments
<b>Shade Trees</b>					
ACM	4	MORTON MAPLE	Acer myabe 'Morton'	3' BB	
ACTR	10	PACIFIC SUNSET MAPLE	Acer truncatum 'Pacific Sunset'	3' BB	
ACSA	2	GREEN MOUNTAIN SUGAR MAPLE	Acer saccharum 'Green Mountain'	3' BB	
ACSA-4	4	GREEN MOUNTAIN SUGAR MAPLE	Acer saccharum 'Green Mountain'	4' BB	
CEOC	8	COMMON HACKBERRY	Celtis occidentalis	3' BB	
CEOC-4	5	COMMON HACKBERRY	Celtis occidentalis	4' BB	
GBI	4	PRINCETON SENTRY GINKGO	Ginkgo biloba 'Princeton Sentry'	3' BB	Male Only
GLTR	7	SKYLINE HONEYLOCUST	Gleditsia triacanthos inermis 'Skyline'	3' BB	
LITU	11	TULIP TREE	Liriodendron tulipifera	3' BB	
NYSY	4	BLACK TUPELO	Nyssa sylvatica	3' BB	
NYSY-4	5	BLACK TUPELO	Nyssa sylvatica	4' BB	
OSVI	12	IRONWOOD	Ostrya virginiana	3' BB	
PLAC	3	EXCLAMATION LINDEN	Platanus x acerifolia 'Morton Circle'	3' BB	
QUSH	3	SHUMARD OAK	Quercus shumardi	3' BB	
ROPS	6	CHICAGO BLES BLACK LOCUST	Robinia pseudacacia 'Chicago Blue'	3' BB	
TADI	11	SHAWNEE BRAVE BALD CYPRESS	Taxodium distichum 'Shawnee Brave'	3' BB	
TADI-4	2	SHAWNEE BRAVE BALD CYPRESS	Taxodium distichum 'Shawnee Brave'	4' BB	
TIAM	11	REDMOND LINDEN	Tilia americana 'Redmond'	3' BB	
TIAM-4	5	REDMOND LINDEN	Tilia americana 'Redmond'	4' BB	
ULAC	5	ACCOLADE ELM	Ulmus 'Accolade'	3' BB	
ULFR	2	FRONTIER ELM	Ulmus x 'Frontier'	3' BB	
ULMS	6	TRUMPHELM	Ulmus x 'Morton Glossy'	3' BB	
ULPR	6	EMERALD SUNSHINE ELM	Ulmus procumbens 'JFS-Bieberich'	3' BB	
<b>Ornamental Trees</b>					
AMGR	13	AUTUMN BRILLIANCE SERVICEBERRY	Amelanchier grandiflora 'Autumn Brilliance'	6' BB	
BENI	12	RIVER BIRCH	Betula nigra	6' BB	
CECA	4	EASTERN REDBUD	Cercis canadensis	6' BB	
CRCR	67	THORNLESS COCKSPUR HAWTHORN	Crataegus crusgali inermis	6' BB	
MAPR	39	PRAIRIE CRABAPPLE	Malus 'Prairiera'	6' BB	
MASN	32	SPRING SNOW CRABAPPLE	Malus 'Spring Snow'	6' BB	
SYRE	24	JAPANESE TREE LILAC	Syringa reticulata	6' BB	
<b>Evergreen Trees</b>					
ABCO	25	CONCOLOR FRI	Abies concolor	6' BB	
FIAB	23	NORWAY SPRUCE	Picea abies	6' BB	
PIMA	24	BLACK SPRUCE	Picea mariana	6' BB	
PIST	24	EASTERN WHITE PINE	Pinus strobus	6' BB	
PSME	27	DOUGLAS FIR	Pseudotsuga menziesii	6' BB	
<b>Shrubs</b>					
ARME	2	WING BLACK CHOKEBERRY	Aronia melanocarpa 'Wing'	3'	Planted 4'-0" on center
EUAL	50	DWARF BURNING BUSH	Eurogaster alata 'Compactus'	3'	Planted 4'-0" on center
COAL	19	COMPACT REDOBSTER DOGWOOD	Cornus alba	3'	Planted 4'-0" on center
COLU	87	PEKING COTONEASTER	Cotoneaster acutifolia 'Peking'	3'	Planted 4'-0" on center
CORA	67	GRAY DOGWOOD	Cornus racemosa	3'	Planted 4'-0" on center
FOND	41	NORTHERN GOLD FORSYTHIA	Forsythia 'Northern Gold'	3'	Planted 4'-0" on center
HYAR	100	ANNABELLE HYDRANGEA	Hydrangea arborescens	5'	Planted 4'-0" on center
HYDE	87	KALMS ST. JOHNSWORT	Hypericum densiflorum 'Kalm's'	2'	Planted 3'-0" on center
PHOP	80	SUMMER WINE NINEBARK	Physocarpus opulifolius 'Summer Wine'	3'	Planted 4'-0" on center
RIAL	24	ALPINE CURRANT	Ribes alpinum	3'	Planted 4'-0" on center
ROKO	68	KNOCK OUT ROSE	Rosa 'Knock Out'	3'	Planted 4'-0" on center
SPBU	76	ANTHONY WATERER SPREA	Spiraea x bumalda	3'	Planted 4'-0" on center
VIDE	73	ARROWWOOD	Viburnum dentatum	3'	Planted 4'-0" on center
VITR	27	AMERICAN CRANBERRYBUSH	Viburnum trilobum	3'	Planted 4'-0" on center
<b>Evergreen Shrubs</b>					
BUGV	56	GREEN VELVET BOXWOOD	Buxus x 'Green Velvet'	24"	Planted 2'-0" on center
JUHO	10	BLUE CHIP JUNPER	Juniperus horizontalis 'Blue Chip'	24"	Planted 3'-0" on center
THBR	10	BRANDON ARBORVITAE	Thuja occidentalis 'Brandon'	8' BB	
THOC	41	DARK GREEN ARBORVITAE	Thuja occidentalis 'Nigra'	6' BB	Planted 4'-0" on center
<b>Grasses</b>					
CAAC	12	KARL FOERSTER FEATHER REED GRASS	Calamagrostis acutifolia 'Karl Foerster'	#3 Container	Planted 3'-0" on center
PEHA	45	HAMELIN FOUNTAIN GRASS	Pennisetum a 'Hamelin'	#3 Container	Planted 3'-0" on center
MSI	29	PURPLE FLAME GRASS	Miscanthus sinensis 'Purpurascens'	#3 Container	Planted 2'-0" on center
SPHE	71	PRAIRIE DROPSSEED	Sporobolus heterolepis	#1 Container	Planted 2'-0" on center
<b>Perennials, Sedges, Groundcovers &amp; Vines</b>					
GAAR	60	BLANKET FLOWER	Gaillardia aristata	3" Pots	Planted 1'-0" on center
HEHE	180	THORNDALE ENGLISHIVY	Hedera helix 'Thorndale'	#1 Container	Planted 2'-0" on center
HEME	463	HAPPY RETURNS DALLVY	Hemerocallis 'Happy Returns'	#1 Container	Planted 2'-0" on center
HEPM	457	PARDON ME DALLVY	Hemerocallis 'Pardon Me'	#1 Container	Planted 1'-0" on center
HORO	51	ROYAL STANDARD HOSTA	Hosta 'Royal Standard'	#1 Container	Planted 2'-0" on center
IRVE	157	BLUE FLAG IRIS	Iris versicolor	#1 Container	Planted 1'-0" on center
PEDI	45	SMOOTH PENSTEMON	Penstemon digitalis	#1 Container	Planted 1'-0" on center
RUGO	157	GOLDSTRUM BLACK EYED SUSAN	Rudbeckia 'Goldstrum'	#1 Container	Planted 2'-0" on center
SASU	354	MAY NIGHT SALVIA	Salvia x superba 'May Night'	#1 Container	Planted 2'-0" on center
SEVE	61	VERA JAMESON STONECROP	Sedum 'Vera Jameson'	#1 Container	Planted 1'-0" on center

**Landscape Plan**

Scale: 1" = 40'-0"

**Village of Lake Zurich Landscape Requirements**

**Parkway Tree Requirement -**  
 (One) 1 Shade Tree per 50' Between Large Trees

South Rand Road - 451.29 linear feet  
 451.29 / 50 = (9.03) = 9 Large Shade Trees

N. Old Rand Road - 904.4 linear feet  
 246.4 / 50 = (4.93) = 5 Large Shade Trees  
 658.0 / 30 = (21.93) = 22 Small Shade Trees (due to overhead power lines)

**14 Large and 22 Small Parkway Trees Provided on Plan**

**Lot Line Landscaping Areas -**  
 Subject Property - Planned Unit Development (PUD)  
 Lot Line Landscaping patterned after B-1 Zoning District

**Northwest Lot Line Landscaping**  
 295 linear feet adjacent to B-1 Zoning  
 10% Opacity Rating Required = 1 Plant Unit per 100 feet  
 295 / 100 = (2.95) = (3 x 1) = 3 Plant Units  
 3 - (A) Plant Units Provided on Plan

**North Lot Line Landscaping**  
 582 linear feet adjacent to R-5 Zoning  
 60% Opacity Rating Required = 5 Plant Units per 100 feet  
 582 / 100 = (5.82) = (6 x 5) = 30 Plant Units  
 22 - (B) Plant Units Provided on Plan  
 8 - (A) Plant Units Provided on Plan

**East Lot Line Landscaping**  
 528.00 linear feet of East Lot Line adjacent to R-6 Zoning  
 70% Opacity Rating Required = 6 Plant Units per 100 feet  
 528.0 / 100 = (5.28) = (5 x 6) = 33 Plant Units Required  
 8 Existing American Elm and Linden Trees with a total of 67" caliper  
 75" / 3" = 22 Existing Shade Trees counted toward Plant Units  
 33 - (B) Plant Units with Substitutions Provided on Plan

**South Lot Line Landscaping**  
 904.4 linear feet of South Lot Line adjacent to Arterial Road  
 30% Opacity Rating Required = 2 Plant Units per 100 feet  
 904.4 / 100 = (9.04) = (9 x 2) = 19 Plant Units Required  
 19 - (A) Plant Units Provided on Plan

**West Lot Line Landscaping**  
 451.29 linear feet of West Lot Line adjacent to Arterial Road  
 30% Opacity Rating Required = 2 Plant Units per 100 feet  
 451.29 / 100 = (4.51) = (5.0 x 2) = 10 Plant Units Required  
 10 - (A) Plant Units Provided on Plan

**Parking Lot Landscaping -**  
 One (1) Tree per Parking Island

51 Parking Islands on Plan = 51 Trees on Plan

One (1) Tree per 40' linear feet of continuous Parking Island  
 899 linear feet of continuous Parking Island  
 899 / 40 = (22.48) = 23 Trees  
 74 Parking Lot Landscaping Tree Provided on Plan

**LEGEND**

- Turf Area Locations
- Low-Profile Prairie Seed Mix
- Existing Tree Locations
- (pt) - Parkway Trees Required
- (nl) - North Lot Line Landscaping Required
- (nw) - Northwest Lot Line Landscaping Required
- (el) - East Lot Line Landscaping Required
- (sl) - South Lot Line Landscaping Required
- (wl) - West Lot Line Landscaping Required
- (pl) - Interior Parking Lot Landscaping Required



**Manhard CONSULTING LTD.**  
 800 Woodhull Parkway, Suite 200, Lake Zurich, IL 60064  
 Civil Engineers • Surveyors • Water Resources Engineers • Wetland & Wetland Engineers • Planners  
 Construction Managers • Environmental Scientists • Landscape Architects • Planners

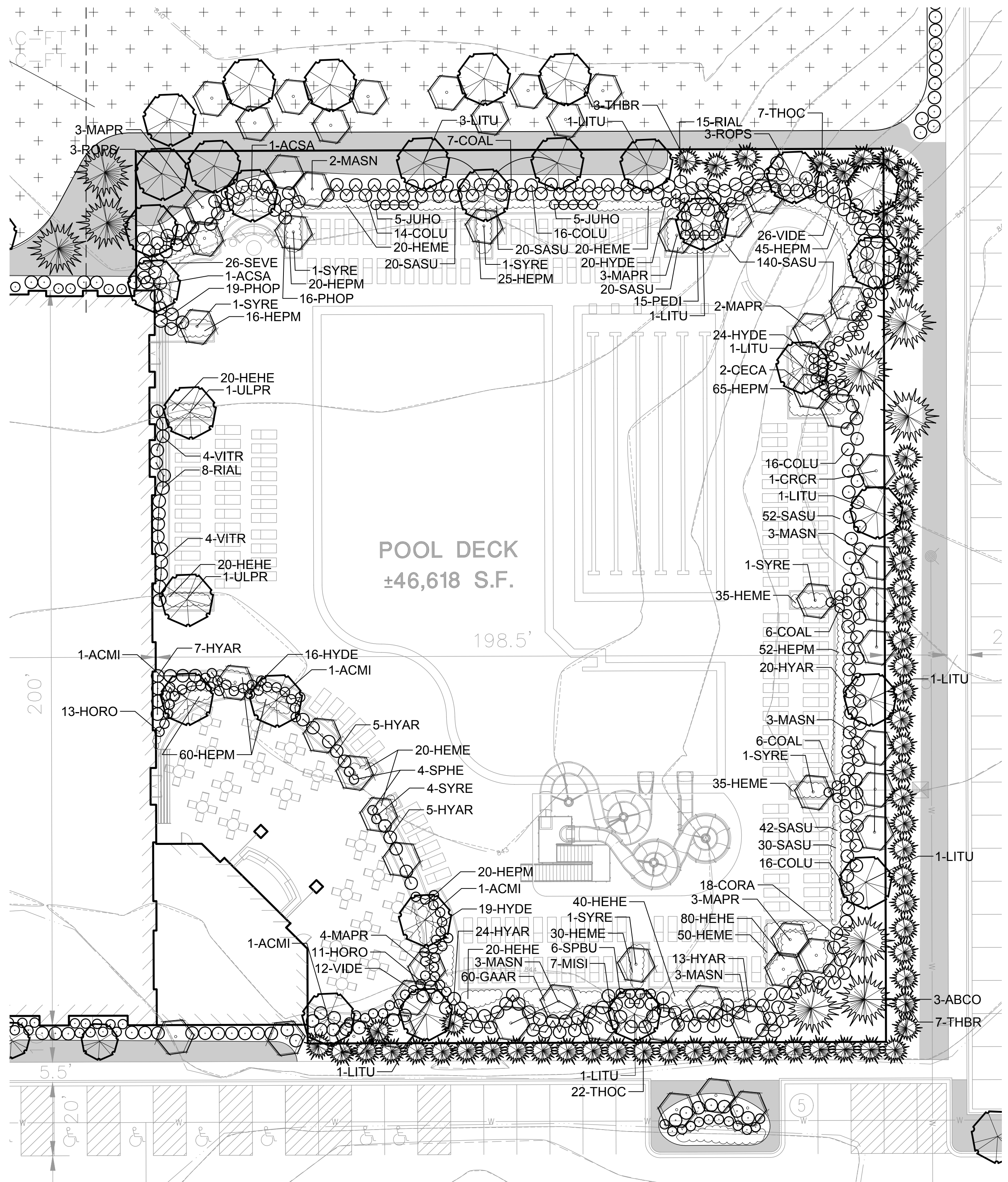
**LIFE TIME**  
 VILLAGE OF LAKE ZURICH, ILLINOIS  
 PRELIMINARY LANDSCAPE PLAN

SHEET  
**L1** OF **L2**  
 LTF.LZIL01

DATE	2-2018	REVISED PER SITE PLAN ADJUSTMENTS
DATE	12-8-17	REVISED PER TREE COMMISSION COMMENTS
DATE	11-8-17	REVISED PER VILLAGE COMMENTS
DATE	9-29-17	REVISED PER CLIENT COMMENTS

PROJ. MGR.: JDF  
 PROJ. ASSOC.: GCM1  
 DRAWN BY: JBD  
 DATE: 9/22/17  
 SCALE: 1" = 40'

February 20, 2018 - 11:21 Draw Name: P:\176201\Lake Zurich\Landscaping Plan 2-18-18.dwg Updated By: bobbluff



Landscape Plan - Pool Deck Enlargement

Scale:

1" = 20'-0"



February 16, 2018 - 14:33 - Dwg Name: P:\1475201\Drawings\Landscaping\Landscaping Plan 2-16-18.dwg - Updated By: bdbhslof

DATE	REVISIONS	BY	CHKD
12-8-17	REVISED PER TREE COMMISSION COMMENTS	JBD	JBD
11-8-17	REVISED PER VILLAGE COMMENTS	JBD	JBD
9-29-17	REVISED PER CLIENT COMMENTS	JBD	JBD

**Manhard CONSULTING LTD.**  
 800 Woodbine Parkway, Suite 100, Oak Brook, IL 60155  
 Civil Engineers • Surveyors • Water Resource Engineers • Water & Wastewater Engineers  
 Construction Managers • Environmental Scientists • Landscape Architects • Planners

**LIFE TIME**  
**VILLAGE OF LAKE ZURICH, ILLINOIS**  
**PRELIMINARY LANDSCAPE PLAN**

PROJ. MGR: JDF  
 PROJ. ASSOC: GMC1  
 DRAWN BY: JBD  
 DATE: 9/8/17  
 SCALE: 1" = 20'

SHEET  
**L2** OF **L2**  
 LTF.LZIL01

© 2015 MANHARD CONSULTING, LTD. ALL RIGHTS RESERVED.